



# GAT MONTHLY MEMBERSHIP PROGRESS REPORT

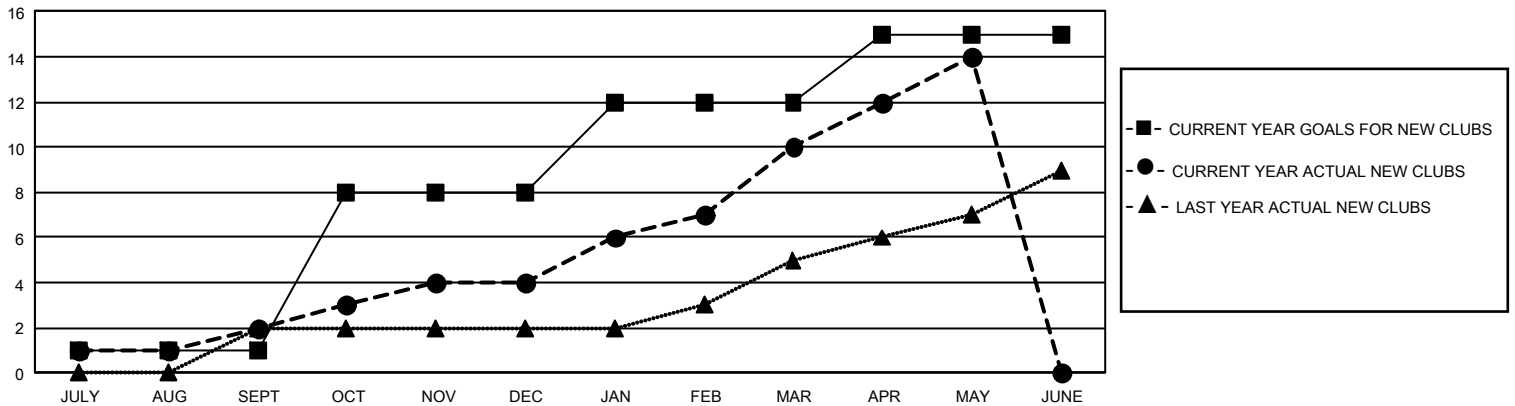
Results as of: 5/31/2025

## GMT Constitutional Area 5 - J, Group I

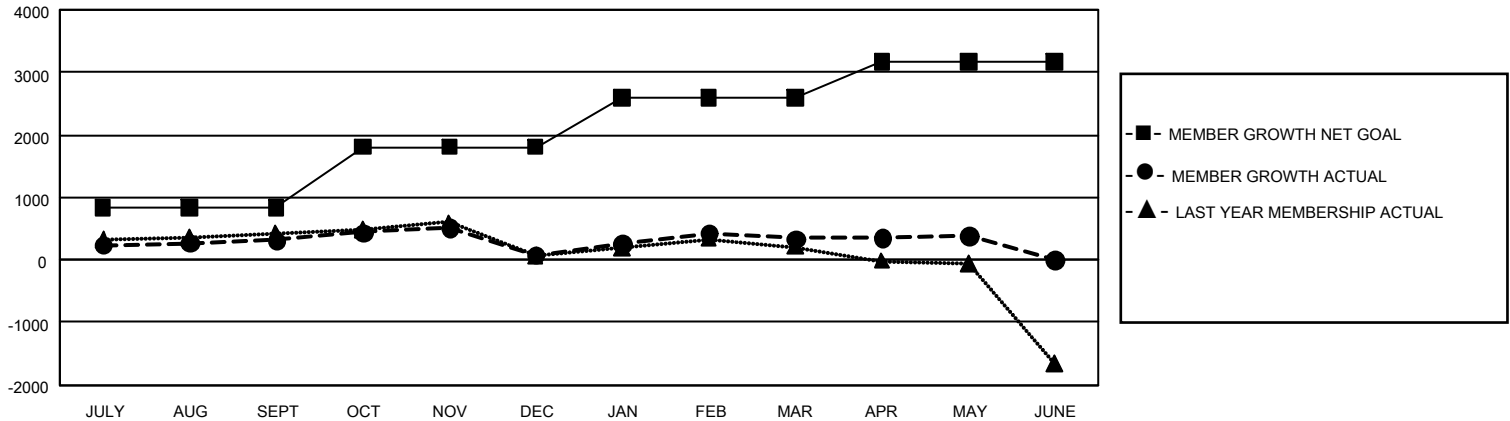
REPORT DOES NOT INCLUDE CLUBS IN UNDISTRICTED AREAS.

Clubs				Members			
RESULTS FOR 2024-2025				RESULTS FOR 2024-2025			
QUARTER	NEW CLUB GOAL	NEW CLUBS	DROPPED CLUBS	QUARTER	MEMBER GROWTH NET GOAL	MEMBER GROWTH ACTUAL	DROPPED MEMBERS ACTUAL (including transfers)
JULY/AUG/SEPT	3	2	1	JULY/AUG/SEPT	830	1,103	681
OCT/NOV/DEC	21	2	7	OCT/NOV/DEC	981	677	862
JAN/FEB/MAR	12	6	1	JAN/FEB/MAR	785	896	580
APR/MAY/JUNE	9	4	0	APR/MAY/JUNE	571	615	527

GOALS AND ACTUAL NEW CLUBS CUMULATIVE



GOALS AND ACTUAL MEMBERS CUMULATIVE



DROPPED CLUBS: 9

788 CLUBS OF 1,103 ADDED 1 OR MORE NEW MEMBERS

### GENDER DISTRIBUTION

MALE	30,201 (78.40%)
FEMALE	8,314 (21.58%)
NON BINARY	1 (0.00%)
PREFER NOT TO ANSWER	6 (0.02%)

### DROPPED MEMBERS

DECEASED	278
CLUB CANCELLED	2
OTHER	2,306
<b>TOTAL</b>	<b>2,586</b>

[CLICK HERE FOR CUMULATIVE MEMBERSHIP DATA](#)

TOTAL FAMILY UNIT MEMBERS 8,849

FAMILY MEMBERS PAYING HALF DUES 4,892